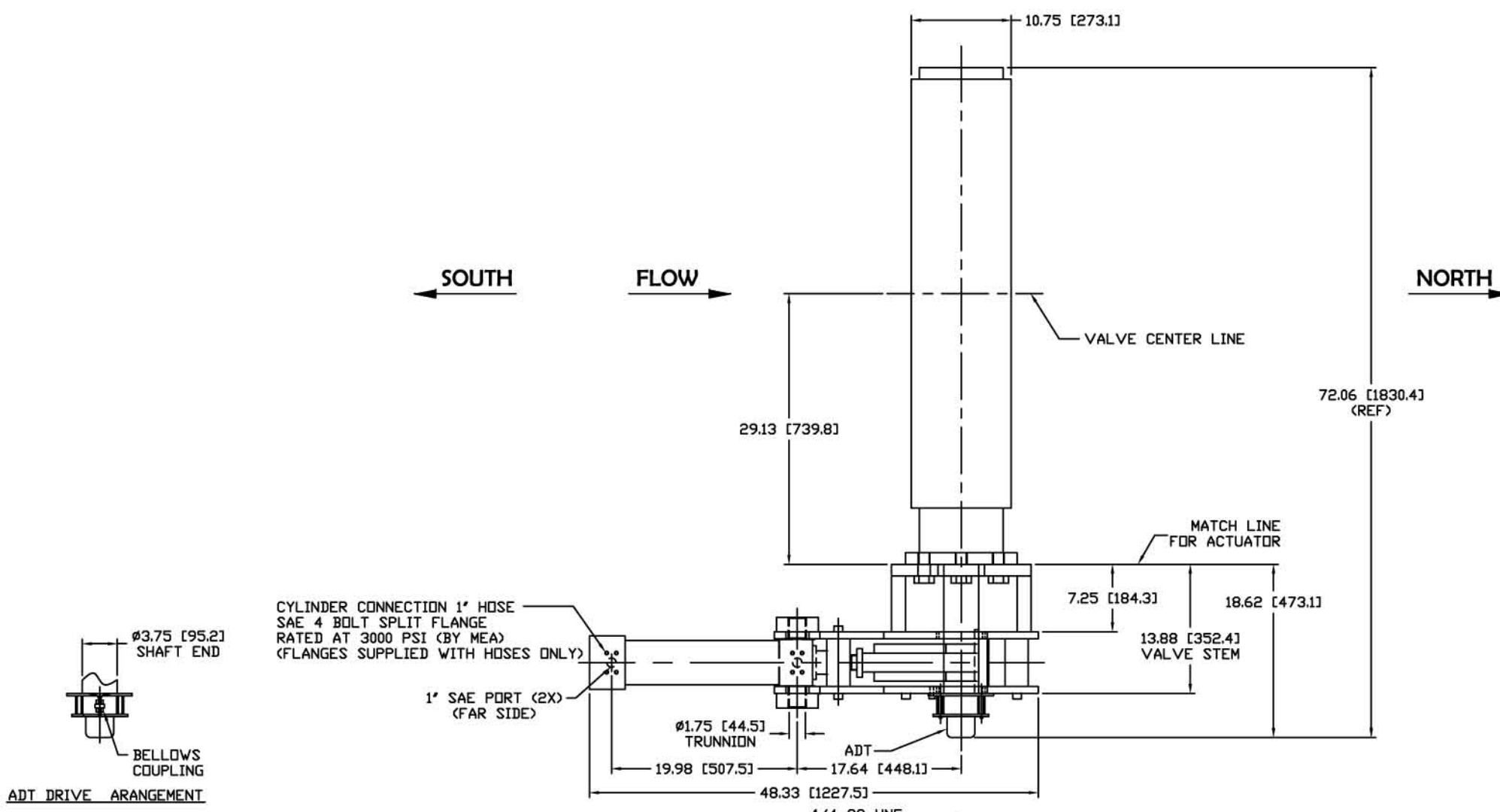
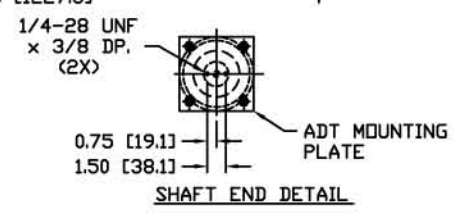
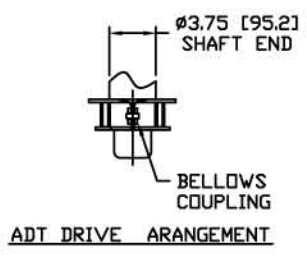


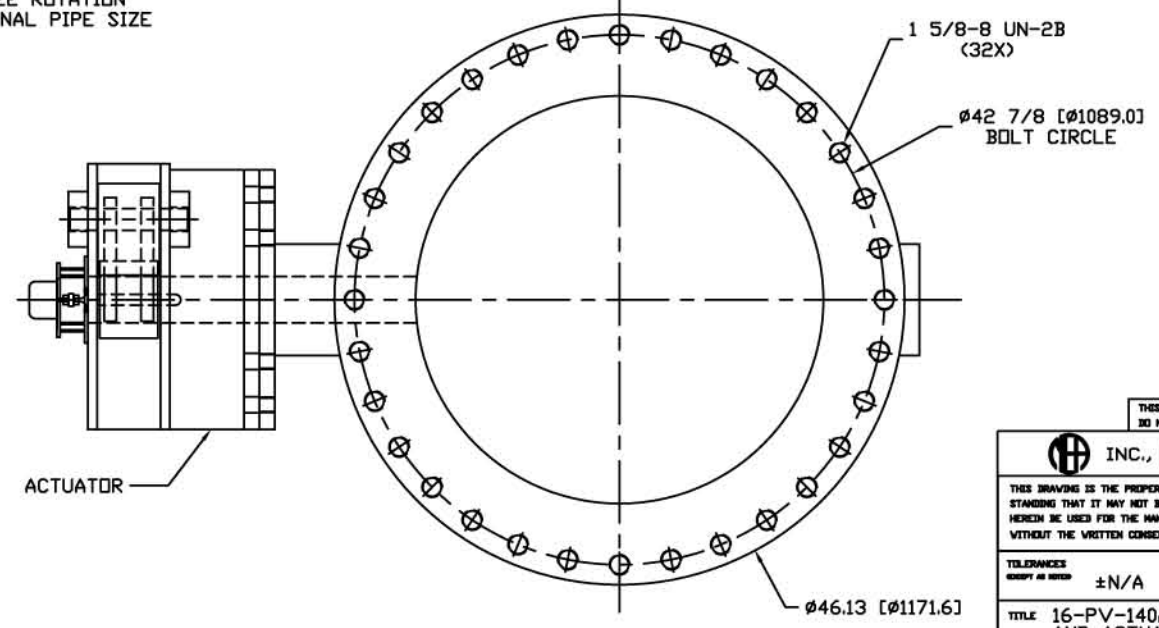
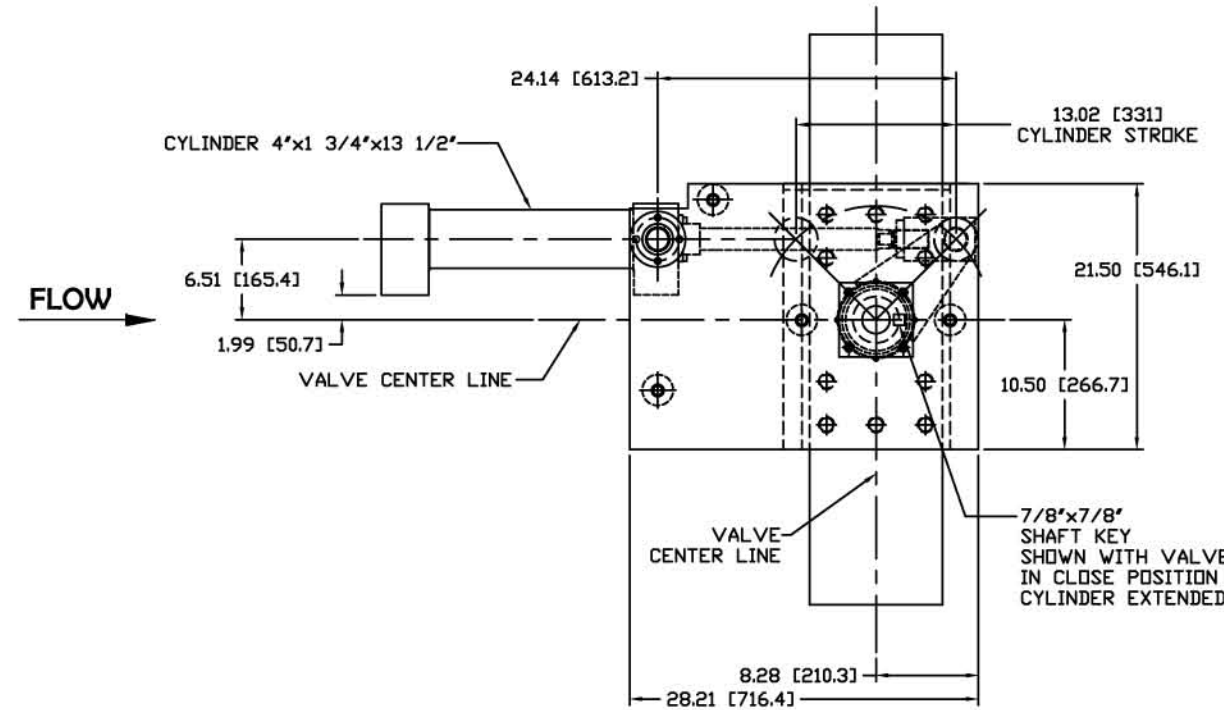
DATE	BY	REVISION RECORD	EDW	BR	CK



- NOTES:
1. DIMENSIONS IN INCHES (MILLIMETERS).
  2. HYDRAULIC CYLINDER:  
4" BORE x 1 3/4" DIA. PISTON ROD x 13 1/2" STROKE  
REQUIRED STROKE TO OPEN THE VALVE - 13.02" [331]  
VOLUME FOR 13.02" [331] STROKE - 132.3 CU. IN. (2.17 LITER)
  3. ADT DRIVEN FROM VALVE SHAFT THRU ADAPTER LOCATED ON VALVE SHAFT AND BELLOWS COUPLING ON ADT.
  4. TOTAL WEIGHT: 3220 LBS. (1462 KG)  
3.1. ACTUATOR AND CYLINDER: APPROX. 320 LBS. (145 KG.)  
3.2. FISHER 36", A-11 SERIES, 300 ANSI BUTTERFLY VALVE: 2900 LBS (1317 KG)



TAG: 16-PV-140A  
FISHER 36", A-11 SERIES, 300 ANSI BUTTERFLY VALVE  
BUTTERFLY BODY STYLE  
CLASS 300 SINGLE FLANGED END CONNECT.  
IN: CLASS 300  
OUT: CLASS 300  
FLOW DIRECTION: UNIDIRECTION  
3 3/4" SHAFT SIZE  
90 DEGREE ROTATION  
36" NOMINAL PIPE SIZE



THIS IS AN AUTOCAD-DWG DRAWING. DO NOT REVISE MANUALLY. CAB FILE # 104743

<b>INC., ELK GROVE, ILL.</b>		<small>THIS DRAWING IS THE PROPERTY OF NEA, INC. IT IS LOANED WITH THE UNDERSTANDING THAT IT MAY NOT BE REPRODUCED NOR MAY THE INFORMATION CONTAINED HEREIN BE USED FOR THE MAKING OF DRAWINGS OR FOR MANUFACTURING PURPOSES WITHOUT THE WRITTEN CONSENT OF NEA, INC.</small>	
TOLERANCES UNLESS AS NOTED	±N/A	SCALE	1:8
DRAWN BY	CC	CK	BG
APPROVED BY		BG	
TITLE: 16-PV-140A BUTTERFLY VALVE AND ACTUATOR OUTLINE			
DATE	8/1/05	DRAWING NUMBER	D12417-507
REV.	B		