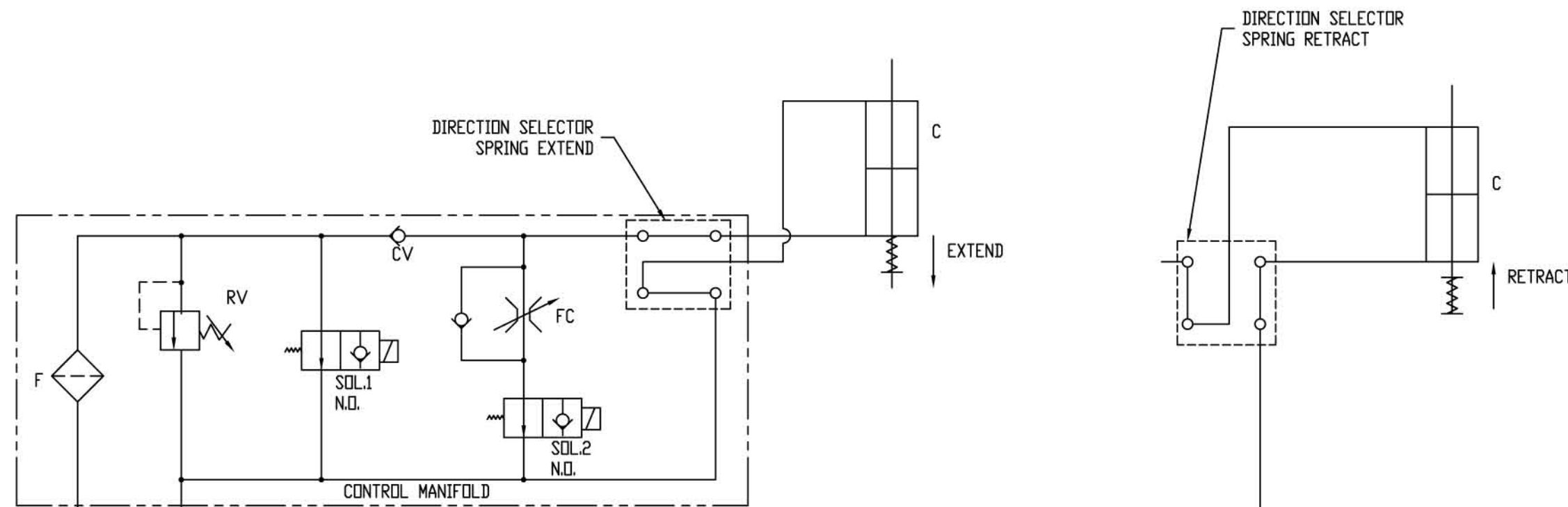


DATE	SYM	REVISION RECORD	AUTH	DR	CK



LEGEND:  
M - MOTOR  
P - PUMP  
F - FILTER  
RV - RELIEF VALVE  
SOL. - SOLENOID OPERATED VALVE  
CV - CHECK VALVE  
FC - FLOW CONTROL VALVE  
N.O. - NORMALLY OPEN  
N.C. - NORMALLY CLOSED  
C - CYLINDER

	SOL.1	SOL.2
FAILURE MODE	DE-ENERGIZE	DE-ENERGIZE
TO RETRACT	ENERGIZE	ENERGIZE
TO EXTEND	DE-ENERGIZE	DE-ENERGIZE
HOLD POSITION	DE-ENERGIZE	ENERGIZE

	SOL.1	SOL.2
FAILURE MODE	DE-ENERGIZE	DE-ENERGIZE
TO EXTEND	ENERGIZE	ENERGIZE
TO RETRACT	DE-ENERGIZE	DE-ENERGIZE
HOLD POSITION	DE-ENERGIZE	ENERGIZE

GROSS THRUST(LBS)	PRESSURE(PSI)
1500	640
3000	1280
4000	1700

THIS IS AN AUTOCAD-13 DRAWING.  
DO NOT REVISE MANUALLY. CAD FILE # 6775

M.E.A. INC. ELK GROVE, ILL.

THIS DRAWING IS THE PROPERTY OF M.E.A. INC. IT IS LOANED WITH THE UNDERSTANDING THAT IT MAY NOT BE REPRODUCED NOR MAY THE INFORMATION CONTAINED HEREIN BE USED FOR THE MAKING OF DRAWINGS OR FOR MANUFACTURING PURPOSES WITHOUT THE WRITTEN CONSENT OF M.E.A. INC.

TOLERANCES (EXCEPT AS NOTED)	SCALE N/A	DRAWN BY RJ	CK PS
		APPROVED BY RMS	

TITLE HYDRAULIC SCHEMATIC FOR MODULATING ACTUATOR-FAIL TO SPRING DRIVEN POSITION

DATE 7-6-98	DRAWING NUMBER NRD5-33-505-02
----------------	----------------------------------