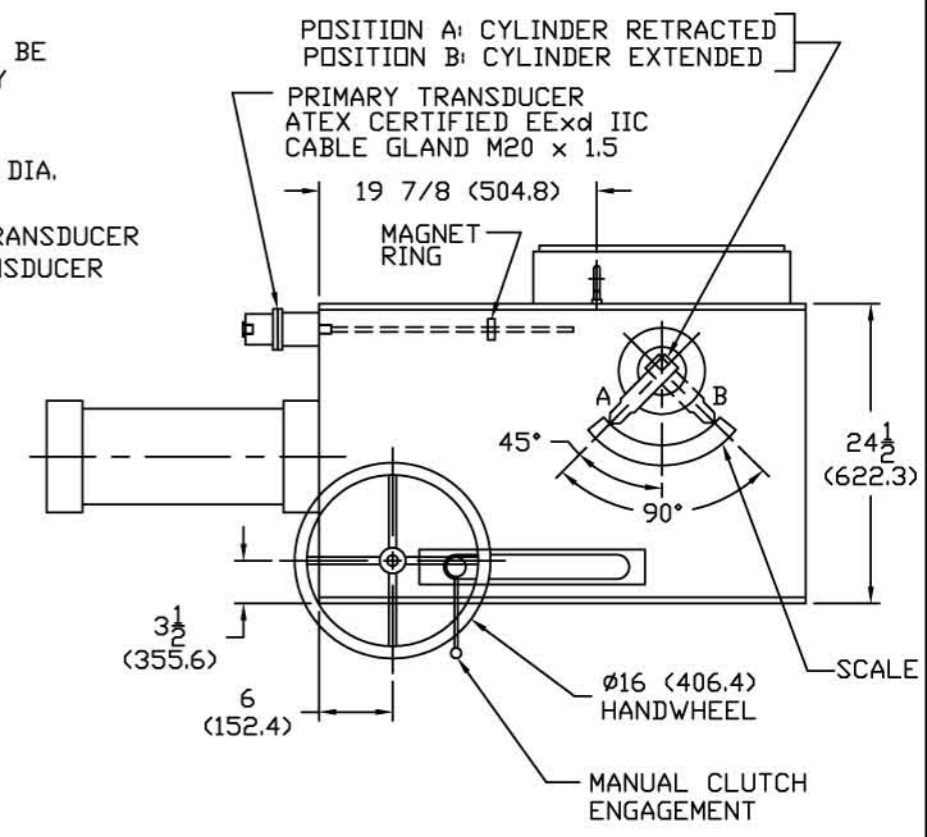
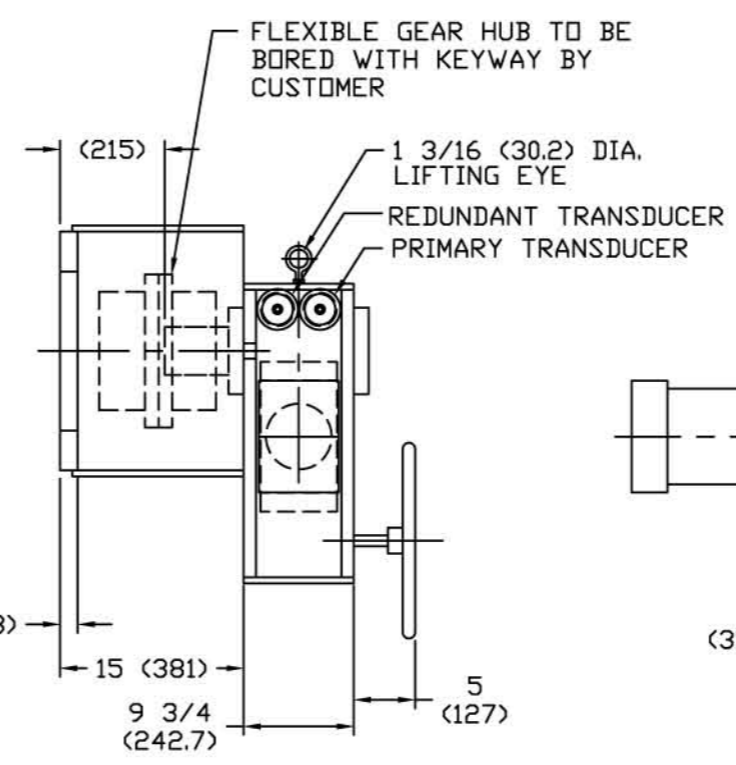
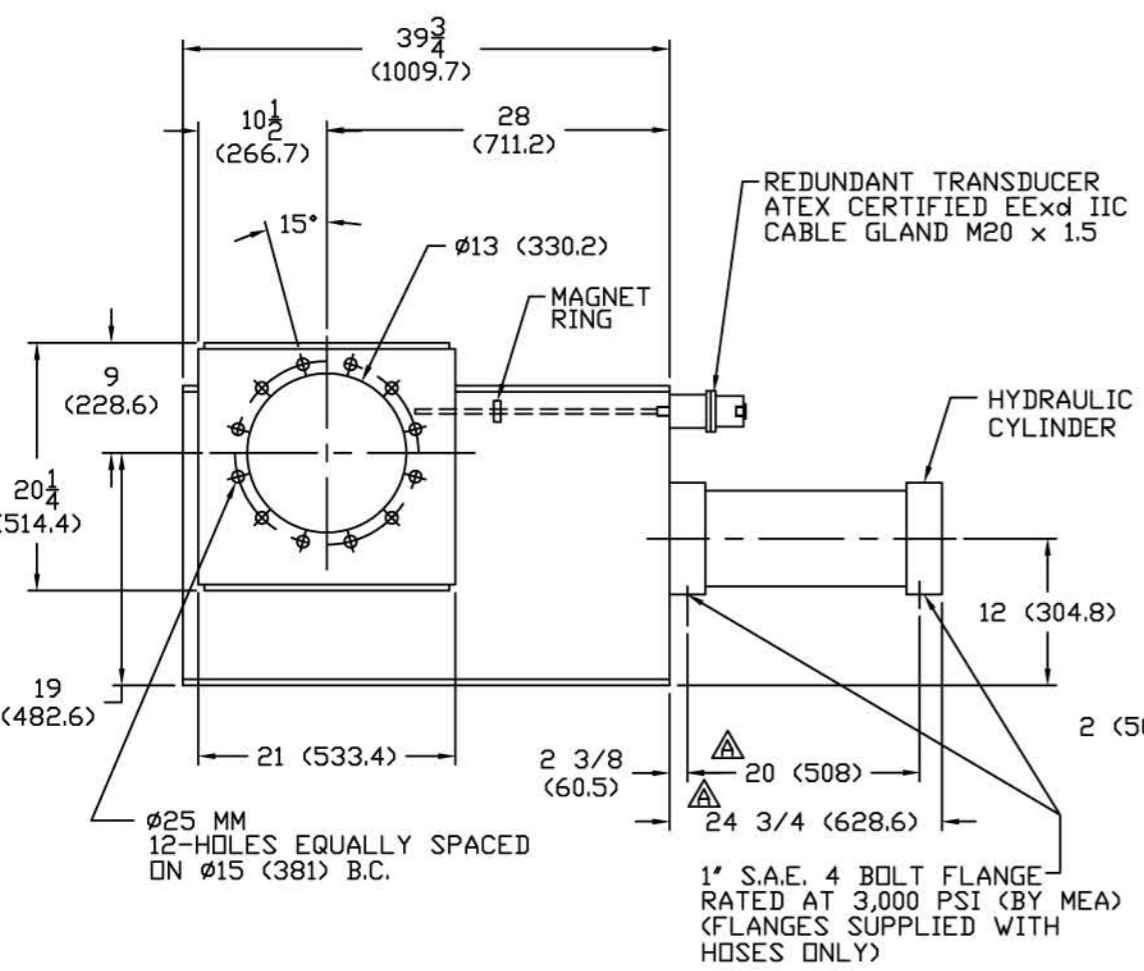


DATE	SYN	REVISION RECORD	ECN#	DR	CK
4/3/08	A	WAS FINISH PAINTING NOW FINISH NICKEL PLATE	3879	CC	MC
		DISTANCE BETWEEN CYLINDER HYD. PORTS WAS 18", NOW 20"			
		LENGTH OF CYLINDER WAS 22 1/4", NOW 24 3/4"			



- NOTES:
1. CYLINDER: BORE / MAX. STROKE - 6" (355.6) / 14" (355.6)
 2. WEIGHT: 1600 LB. (727 KG.)
 3. DIMENSIONS IN INCHES (MILLIMETERS)
 4. VALVE CLOSED AT POSITION A.
VALVE OPEN AT POSITION B.
 5. MAXIMUM PRESSURE RATING FOR HYDRAULIC CYLINDER AT 120° F -
- 3000 PSI.
 6. MAXIMUM TORQUE RATING FOR ACTUATOR - 300000 LB-IN.
 7. SPECIFICATION OF MATERIALS / CORROSION PROTECTION:
 - MECHANICAL POSITIONER COMPONENTS MADE OF CARBON STEEL Δ ARE NICKEL PLATED.
 - CYLINDER COMPONENTS MADE OF CARBON STEEL ARE PAINTED
 - MECHANICAL POSITIONER / CYLINDER COMPONENTS MADE OF ALUMINUM ARE CLEAR ANODIZED.
 - CYLINDER PISTON ROD IS MADE OF CHROME PLATED 17-4PH STAINLESS STEEL.
 - SEALS: BUNA N
 8. GRADE 8 BOLTING MATERIALS FOR "ACTUATOR - VALVE" CONNECTION FURNISHED BY CUSTOMER.

B7280-513A REF.

THIS IS AN AUTOCAD DRAWING. DO NOT REVISE MANUALLY. CAD FILE # 11583A

INC., ELK GROVE, ILL.

THIS DRAWING IS THE PROPERTY OF ME.A. INC. IT IS LOANED WITH THE UNDERSTANDING THAT IT MAY NOT BE REPRODUCED NOR MAY THE INFORMATION CONTAINED HEREIN BE USED FOR THE MAKING OF DRAWINGS OR FOR MANUFACTURING PURPOSES WITHOUT THE WRITTEN CONSENT OF ME.A. INC.

TOLERANCES (EXCEPT AS NOTED)	±	SCALE NTS	DRAWN BY CC	CK MC
			APPROVED BY MC	

TITLE EXPANDER INLET BUTTERFLY VALVE 02-PV-218B
90° ACTUATOR OUTLINE

DATE 3/5/08	DRAWING NUMBER C13253-530	REV. A
----------------	------------------------------	-----------